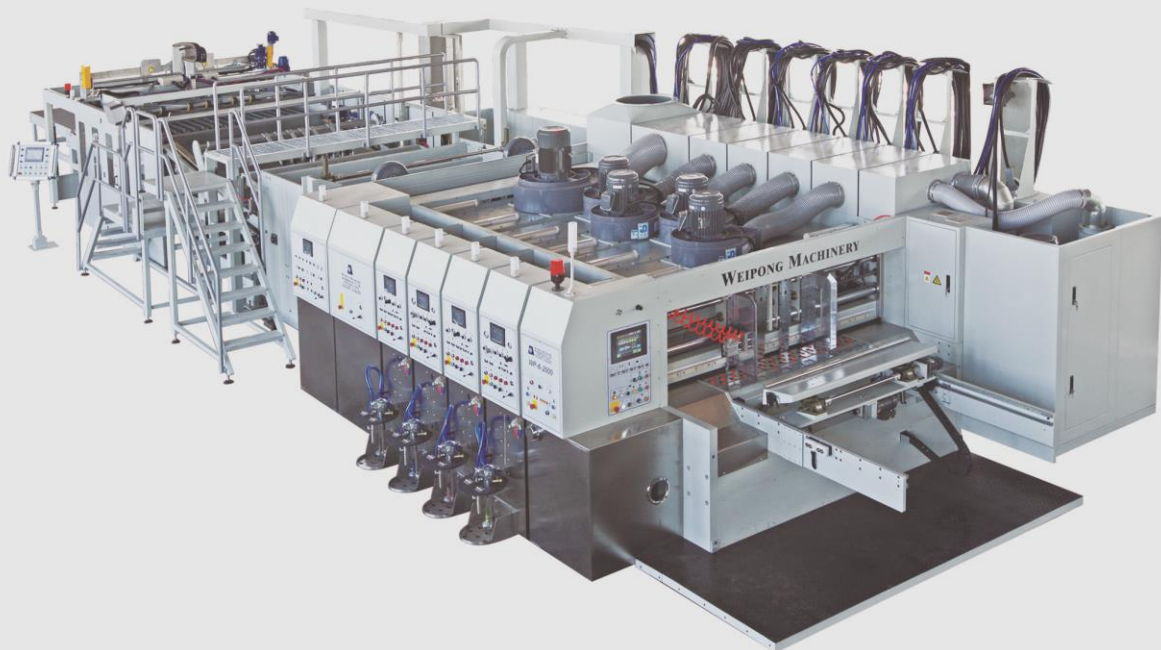




DESCRIPTION	FOUR COLORS FLEXO PRINTING MACHINE, BOTTOM PRINTING / TOP VACUUM TRANSFER, INK CHAMBERED BLADE SYSTEM, SHEET TRANSFER / TOP DIE CUT, STRIPPING STACKER, OPEN/CLOSE TYPE
MODEL	WP6-2000 SSTK
SIZE	1200x2000 MM





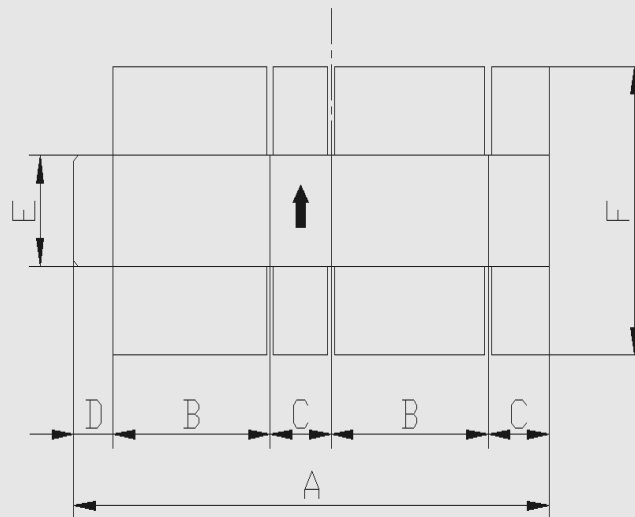
1. MACHINE MAIN SPECIFICATIONS:

UNIT	MAIN FUNCTION	QTY
FEEDER UNIT	<ul style="list-style-type: none"> ✚ Lead edge feeder, Four wheels shaft design. ✚ Internet online service support. ✚ Extending feeding Subsidiary transfer function. ✚ Vacuum dustproof system. 	1
PRINTER UNIT	<ul style="list-style-type: none"> ✚ Bottom printing type. ✚ Vacuum transfer. ✚ Doctor blade system. 	4
SHEET TRANSFER UNIT		1
R.D.C UNIT	<ul style="list-style-type: none"> ✚ Die fixation is with screw fixed pull ring with motorized adjustment, rack positioning. ✚ Direct servo drive control. ✚ Grinding device system. ✚ Speed auto compensation. 	1
STRIPPING STACKER	<ul style="list-style-type: none"> ✚ Die cutting jobs can be one sheet or multiple sheet out. ✚ Excellent stripping effect. ✚ Counter Stacker. ✚ Fully Computerized control system. 	1



MACHINE GENERAL SPECIFICATIONS:

Technical Data (MM)		Model	WP-6-2000 STK
Max. Sheet Width(A)	MAX		2000
	MIN		600
Max. Sheet Length(F)	Continuous Feed		1200
	Skip Feed		1500
Min. Sheet Length(F)			350
Max. Print Area (Mathew system)			1200x1850
Max. Print Area (mounting plate)			1160x1850
Min. Slotter gap	Reverse direction-mm	MIN(B)	220
		MIN(C)	60
	Normal direction-mm	MIN	130
Box Height	MIN(E)		90
Glue Lap Width(D)			50
Max. Machine Speed	(BOX/HR)		15,000
Board Thickness			1.2-9
Color process precision			±0.5



****Data is for reference only, no contract value**

****We have the right to change the parts with the same level brand for device use without any further notice.**