

偉鵬機械有限公司 (台資企業)

地址 江蘇省儀徵市馬集鎮八里工業集中區

電話 0514-8366 5988 郵編 211414

傳真 0514-8366 6448 郵箱 sales@weipong.com

WEIPONG MACHINERY
CO.,LTD. (TAIWAN)



WEIPONG MACHINERY

Add Bali Industry Area, Maji Town, Yizheng City, Jiangsu province, China (211414)

Tel 86 514 83665988 E-mail sales@weipong.com

Fax 86 514 83666448

www.weipong.com

DESCRIPTION	FIVE COLORS FLEXO FOLDER GLUER, TOP PRINTING / BOTTOM VACUUM TRANSFER, INK CHAMBERED BLADE SYSTEM, DOUBLE SLOTTING SHAFTS/ BOTTOM DIE CUT, DOWN FOLDING/ TOP LOADING COUNTER EJECTOR, OPEN/CLOSE TYPE
MODEL	WP4-2200 FFG
SIZE	800x2200 MM



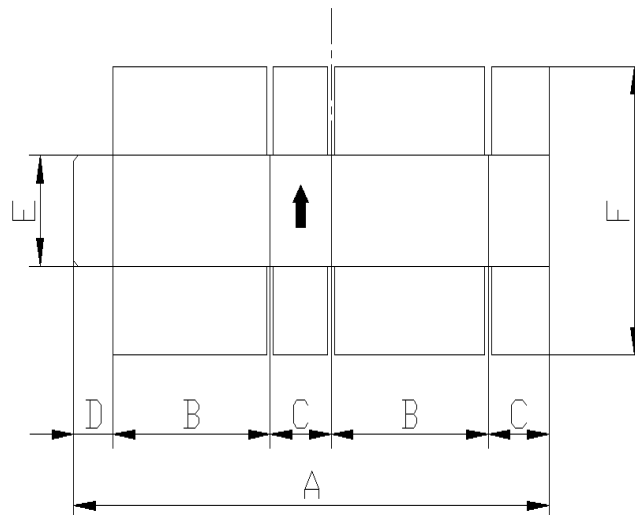


1. MACHINE MAIN SPECIFICATIONS:

UNIT	MAIN FUNCTION	QTY
FEEDER UNIT	<ul style="list-style-type: none"> ✚ Lead edge feeder, Four wheels shaft design. ✚ Internet online service support. ✚ Extending feeding Subsidiary transfer function. ✚ Vacuum dustproof system. 	1
PRINTER UNIT	<ul style="list-style-type: none"> ✚ Top printing type. ✚ Vacuum transfer. ✚ Doctor blade system. 	5
SLOTING UNIT	<ul style="list-style-type: none"> ✚ Double shafts slotter design. ✚ Central knife with fixed type. ✚ Two pieces faces are closed type, pre-creasing shaft creasing/scoring shaft. ✚ Pre-creasing, creasing, slotting position with united adjustment. 	1
R.D.C UNIT	<ul style="list-style-type: none"> ✚ Die fixation is with screw fixed pull ring with motorized adjustment, rack positioning. ✚ Direct servo drive control. ✚ Grinding device system. ✚ Speed auto compensation. 	1
FOLDER GLUER & COUNTER EJECTOR	<ul style="list-style-type: none"> ✚ Gluing section. ✚ Folding section- Down folding. ✚ Counter ejector- Top loading. ✚ Preset Control. 	1

MACHINE GENERAL SPECIFICATIONS:

Technical Data (MM)		Model	WP-4-2200 FFG
Max. Sheet Width(A)	MAX		2200
	MIN		500
Max. Sheet Length(F)	Continuous Feed		800
	Skip Feed		1100
Min. Sheet Length(F)			280
Max. Print Area (Mathew system)			800x2050
Max. Print Area (mounting plate)			770x2050
Min. Slotter gap	Reverse direction-mm	MIN(B)	190
		MIN(C)	60
	Normal direction-mm	MIN	125
Box Height	MIN(E)		80
Glue Lap Width(D)			40
Max. Machine Speed	(BOX/H)		18,000
Board Thickness			1.2-9
Color process precision			±0.5

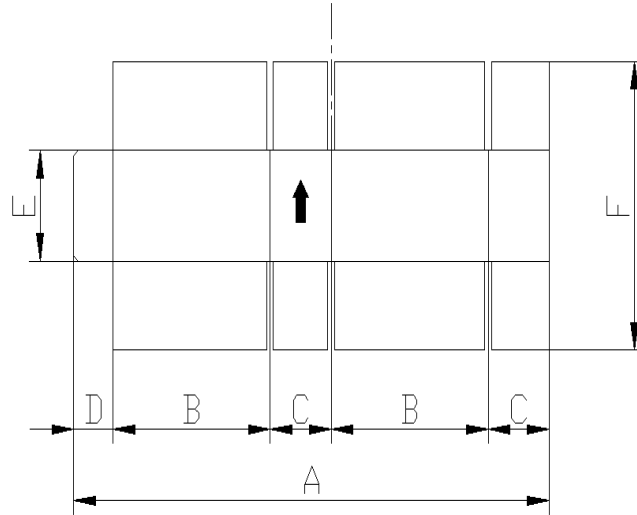


****Data is for reference only, no contract value**

****We have the right to change the parts with the same level brand for device use without any further notice.**

地址 江蘇省儀徵市馬集鎮八里工業集中區
電話 0514-8366 5988 郵編 211414
傳真 0514-8366 6448 郵箱 sales@weipong.com

Add Bali Industry Area, Maji Town, Yizheng City, Jiangsu province, China (211414)
Tel 86 514 83665988 E-mail sales@weipong.com
Fax 86 514 83666448
www.weipong.com



SPECIFICATIONS

<u>MODEL</u>	WP4-2200 FFG
B+C max.	1025
B+C min.	340
F max.	1000
F min.	280
A max.	2200
A min.	720
Max. Machine Speed (BOX/HR)	18,000
Board Thickness	A-B-CE-BC-BE

**** All data is for reference only, not a contract value.**

**** Speed is varied according to the different sheet sizes, quality,....etc.**

**** We have the right to change the specification for improvement use or the brand with the same level. without further notice.**