








DESCRIPTION	THREE COLORS FLEXPRESS PRINTING MACHINE, BOTTOM PRINTING, PULL ROLL TRANSFER, RUBBER ROLL INKING SYSTEM, DOUBLE SLOTTING SHAFTS, INDEPENDENT CREASING UNIT, TOP DIE CUT, STACKER, OPEN/CLOSE TYPE
MODEL	WP10-4500 STK
SIZE	2000x4500 MM





1. MACHINE MAIN SPECIFICATIONS:

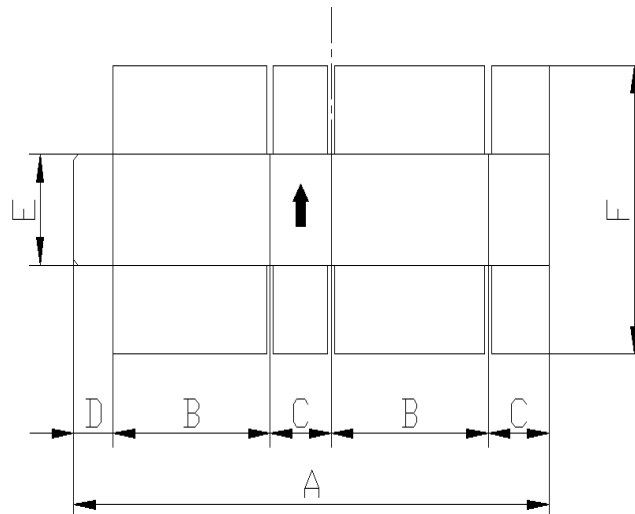
UNIT	MAIN FUNCTION	QTY
<p>FEEDER UNIT</p>	<ul style="list-style-type: none"> ✚ Lead edge feeder, Four wheels shaft design. ✚ Internet online service support. ✚ Extending feeding Subsidiary transfer function. ✚ Vacuum dustproof system. 	<p>1</p>
<p>PRINTER UNIT</p>	<ul style="list-style-type: none"> ✚ Bottom printing type. ✚ Pull roll transfer. ✚ Rubber roller inking. 	<p>3</p>
<p>SLOTTER UNIT</p>	<ul style="list-style-type: none"> ✚ Double shafts slotter design. ✚ Central knife with fixed type. ✚ Two pieces faces are closed type, pre-creasing shaft creasing/scoring shaft. ✚ Pre-creasing, creasing, slotting position with united adjustment. 	<p>1</p>
<p>R.D.C UNIT</p>	<ul style="list-style-type: none"> ✚ Die fixation is with screw fixed pull ring with motorized adjustment, rack positioning. ✚ Anvil roll is driven by servo. ✚ Speed compensation is controlled by Inverter. ✚ Die roll is gear driven. 	<p>1</p>
<p>STACKER</p>	<ul style="list-style-type: none"> ✚ Side Jogging and even paper device with air pressure type (Single side). ✚ Full paper with Auto sensor. 	<p>1</p>

地址 江蘇省儀徵市馬集鎮八里工業集中區
電話 0514-8366 5988 郵編 211414
傳真 0514-8366 6448 郵箱 sales@weipong.com

Add Bali Industry Area, Maji Town, Yizheng City, Jiangsu province, China (211414)
Tel 86 514 83665988 E-mail sales@weipong.com
Fax 86 514 83666448
www.weipong.com

MACHINE GENERAL SPECIFICATIONS:

Technical Data (MM)		Model	WP-10-4500 STK
Max. Sheet Width(A)	MAX		4500
	MIN		900
Max. Sheet Length(F)	Continuous Feed		2000
	Skip Feed		2200
Min. Sheet Length(F)			495
Max. Print Area (Mathew system)			2000x4450
Max. Print Area (mounting plate)			1965x4450
Min. Slotter gap	Reverse direction-mm	MIN(B)	350
		MIN(C)	125
	Normal direction-mm	MIN	190
Box Height	MIN(E)		90
Glue Lap Width(D)			70
Max. Machine Speed	(BOX/HR)		6,000
Board Thickness			1.2-9
Color process precision			±0.5



**** Data is for reference only, no contract value**
**** We have the right to change the parts with the same level brand for device use without any further notice.**